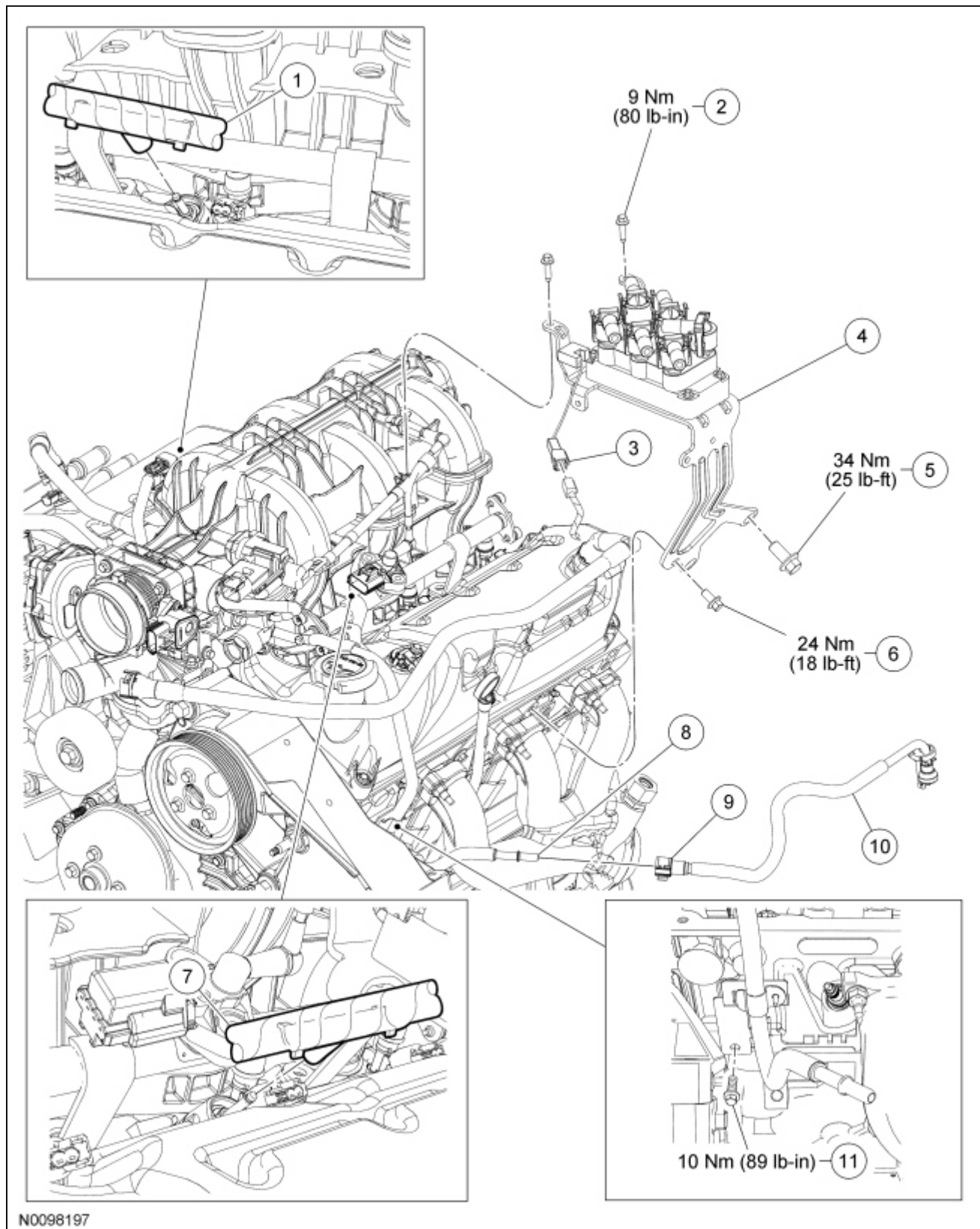


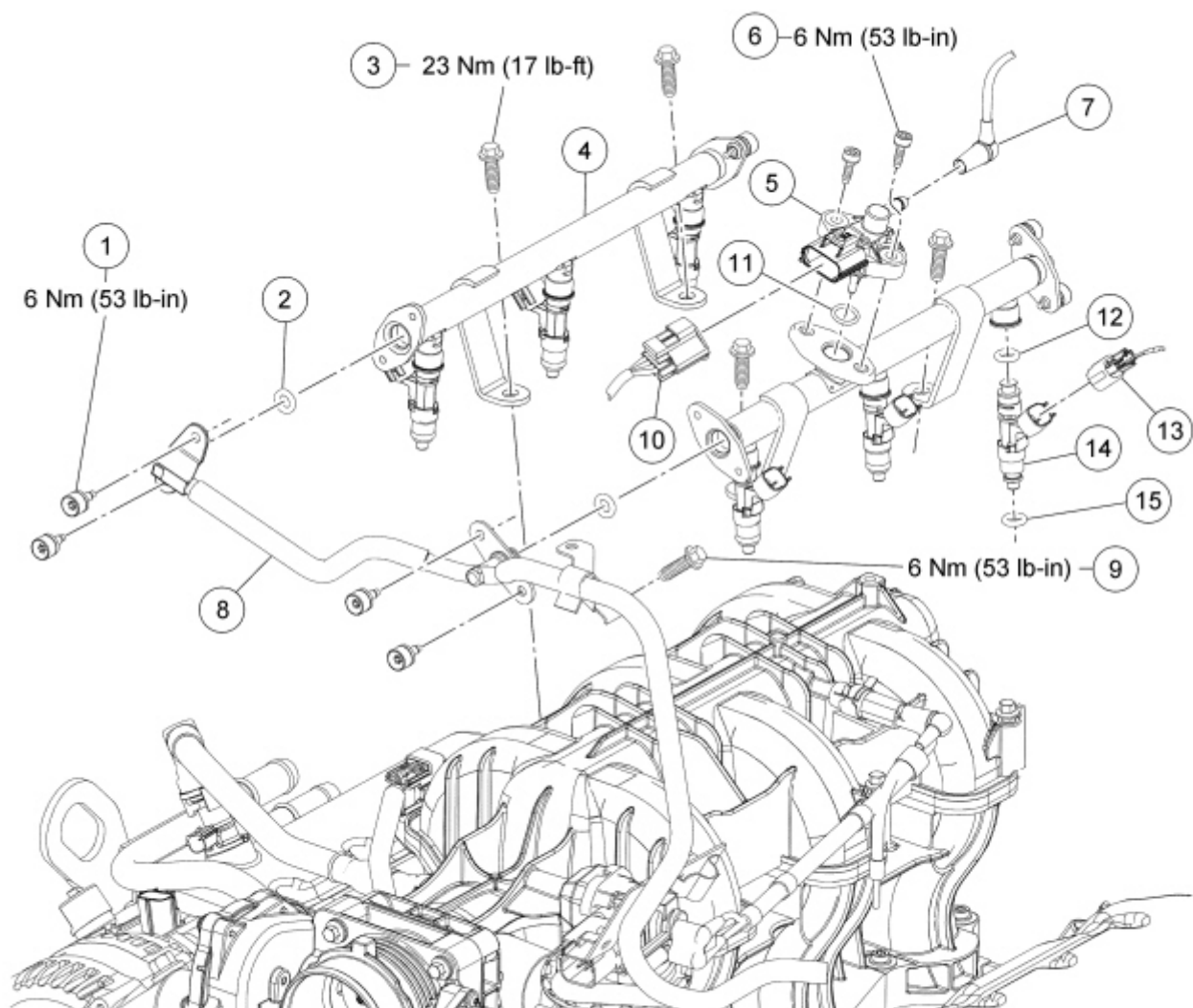
## Fuel Rail and Fuel Injector — Exploded View

### Ignition Coil, Wire Harness and Fuel Tube



Item	Part Number	Description
1	13A506	RH wiring harness retainer
2	W500214	Ignition coil bracket upper bolt (2 required)
3	14A464	Radio capacitor electrical connector
4	12A310	Ignition coil bracket
5	W500041	Ignition coil bracket lower bolt (M12)
6	W500022	Ignition coil bracket lower bolt (M8)
7	13A506	LH wiring harness retainer
8	9E964	Fuel rail supply tube
9	—	Fuel jumper tube quick connect coupling (part of 9J280)
10	9J280	Fuel jumper tube
11	W500213	Lower fuel rail supply tube bracket bolt

## Fuel Rail and Injectors



N0098201

Item	Part Number	Description
1	W708086	Fuel rail supply tube bolt (4 required)
2	9229	Fuel rail supply tube O-ring seal (2 required)
3	W500023	Fuel rail bolt (4 required)
4	9D280	Fuel rail (2 required)
5	9G756	Fuel rail pressure and temperature sensor
6	W709515	Fuel rail pressure and temperature sensor bolt (2 required)
7	9E499	Fuel rail pressure and temperature sensor vacuum hose
8	9E964	Fuel rail supply tube
9	W500204	Upper fuel rail supply tube bracket bolt
10	14A464	Fuel rail pressure and temperature sensor electrical connector
11	—	Fuel rail pressure and temperature sensor O-ring seal (part of 9G756)

12	9229	Upper fuel injector O-ring seal (6 required)
13	14A464	Fuel injector electrical connector (6 required)
14	9F593	Fuel injector (6 required)
15	9229	Lower fuel injector O-ring seal (6 required)

1. For additional information, refer to the procedures in this section.
-